

Weekly Report

2016 Week 6 (February 07 – February 13, 2016) through 2017 Week 6 (February 05 – February 11)

Department of Health and Human Services
Division of Public and Behavioral Health
Office of Public Health Informatics and Epidemiology



Brian Sandoval
Governor
State of Nevada

Richard Whitley, MS
Director
Department of Health and Human Services

Cody L. Phinney, MPH
Administrator
Division of Public and Behavioral Health

John DiMuro, DO, MBA
Chief Medical Officer
Division of Public and Behavioral Health

*March 2017
Edition 1.0*

Data for the graphs and tables on the following pages are provisional and may be updated as additional information becomes available.

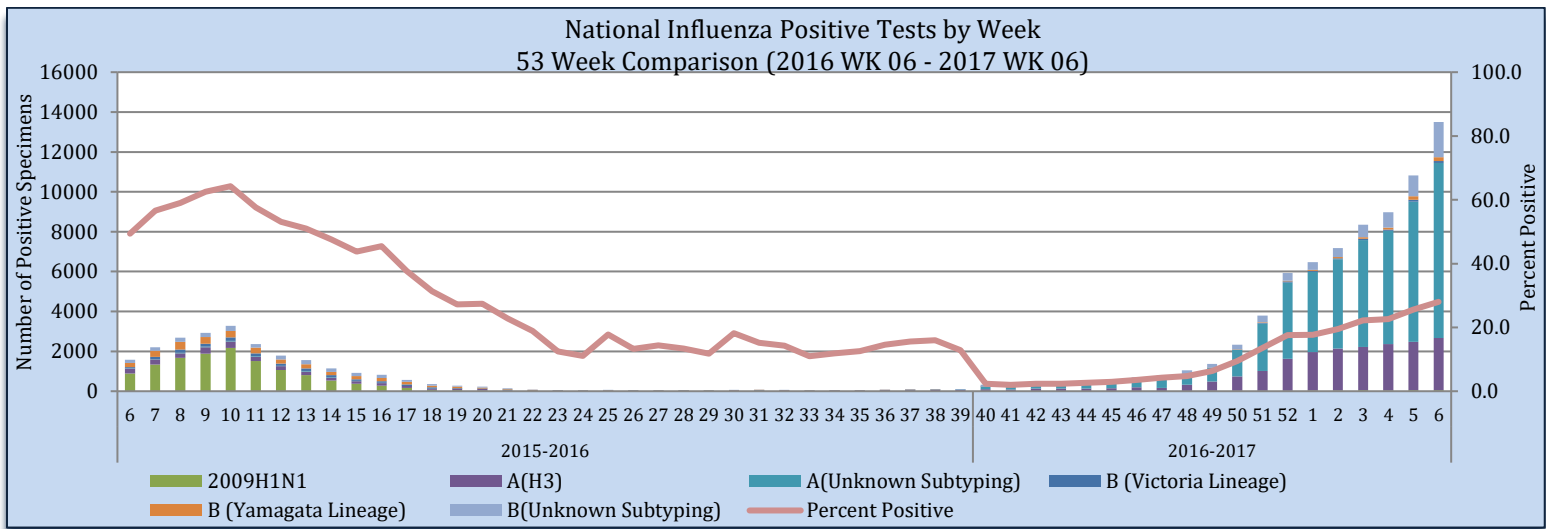
Purpose

The purpose of this report is to provide an overview of and statistics for the influenza season in Nevada for the local public health authorities, sentinel providers and the public.

Sentinel Provider Data: Influenza-Like Illness Network Surveillance (ILINet)

Respiratory specimens are tested for influenza by the World Health Organization (WHO) and National Respiratory and Enteric Virus Surveillance System (NRVESS) collaborating laboratories by sub-type. During week 06, there were 48,178 specimens collected and tested for influenza, of those 13,510 were positive (28%).

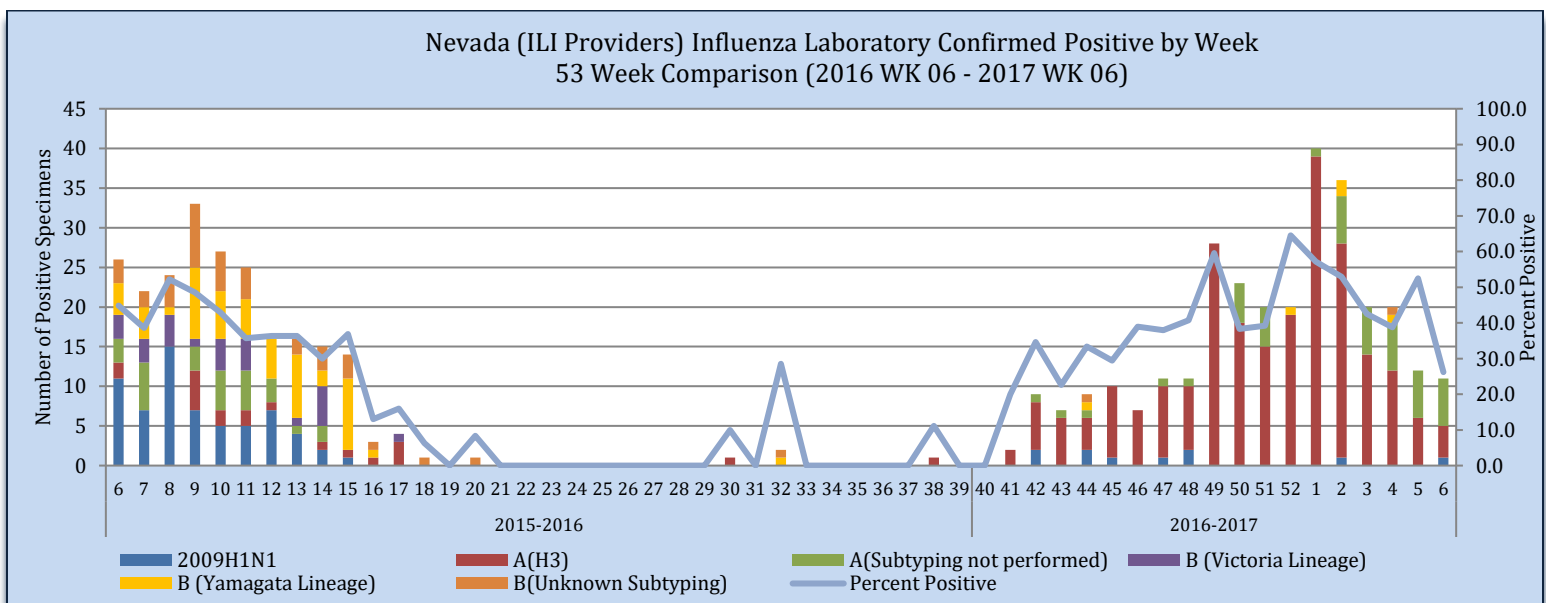
Figure 1



Source of Data: CDC: FluView Weekly Report.

The Nevada total includes laboratory tests for all Nevada residents tested by sentinel providers including out of state laboratories. During week 06, there were 42 specimens collected and 11 were positive (26.2%). There is a two week delay for laboratory surveillance.

Figure 2



Source of Data: CDC: ILINet.

Nevada State Public Health Laboratory (NSPHL) has tested 272 specimens for influenza from sentinel providers, of which there have been 235 positive (86.4%). Southern Nevada Public Health Laboratory (SNPHL) has tested 49 specimens this season of which there have been 5 positives. Nationally, there have been 505,973 specimens sent to the WHO and NERVSS laboratories of which 73,670 have been positive (14.6%). The national numbers in Table 1 are reflected in Figure 1. The state of Nevada data in Table 1 is reflected in Figure 2. The Nevada total includes laboratory test for all Nevada residents tested by sentinel providers, including out of state laboratories.

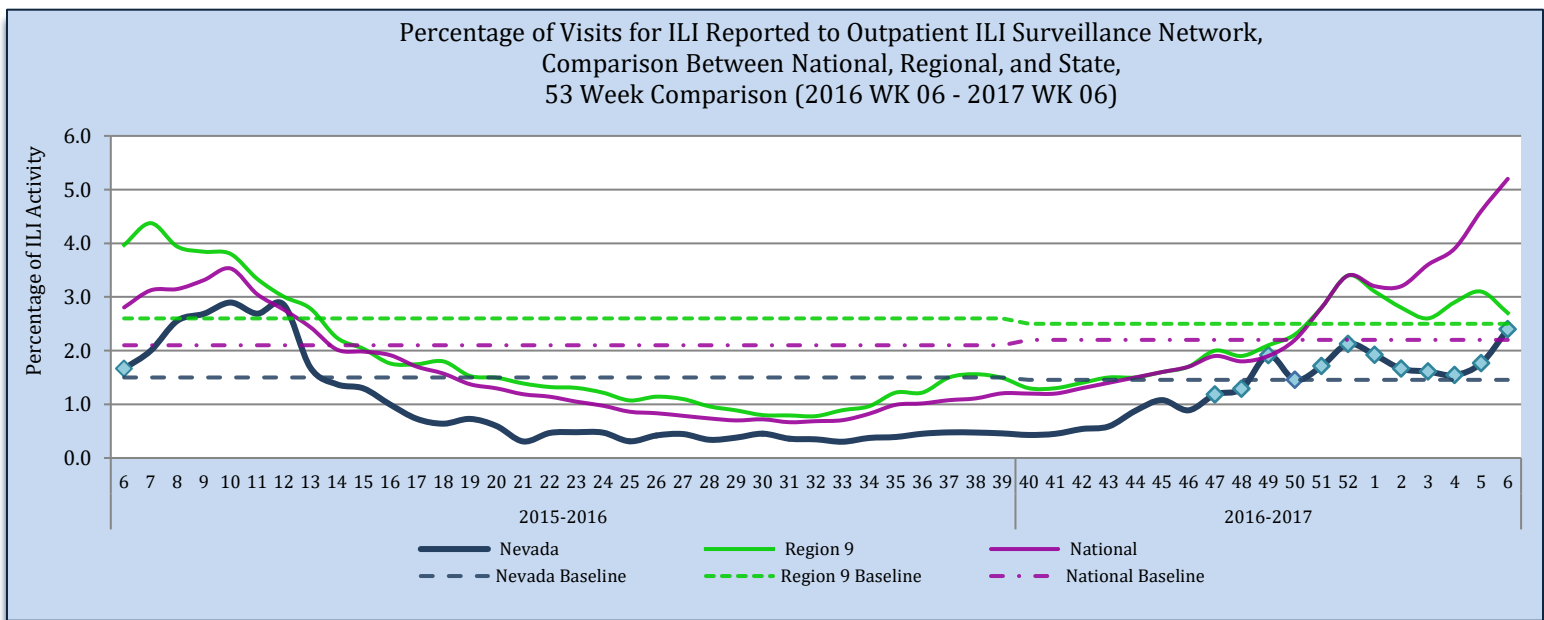
Table 1

	Influenza Specimens Tested State and Nationally through Sentinel Providers										
	NSPHL	SNPHL	All Other Laboratories	State of Nevada (Week 06)		State of Nevada (Season)		National (Week 06)		National (Season)	
				#	%	#	%	#	%	#	%
Specimens Tested	272	49	394	42		715		48,178		505,973	
Influenza Positives	235	5	64	11	26.2	304	42.5	13,510	28.0	73,670	14.6
Influenza A:	231	5	61	11	100	297	97.7	11,440	84.7	64,955	88.2
A (2009 H1N1)	9	0	1	1	9.1	10	3.4	60	0.5	497	0.7
A (H3)	222	5	6	4	36.4	233	78.5	2,602	22.7	18,673	28.7
A (Sub-typing not performed)	0	0	54	6	54.5	54	18.2	8,778	76.7	45,815	70.5
Influenza B:	4	0	3	0	0.0	7	2.3	2,070	15.3	8,715	11.8
B (Victoria Lineage)	0	0	0	0	0.0	0	0.0	103	5.0	613	7.0
B (Yamagata Lineage)	4	0	1	0	0.0	5	71.4	193	9.3	800	9.2
B (Sub-typing not performed)	0	0	2	0	0.0	2	28.6	1,774	85.7	7,302	83.8

Source of Data: CDC: FluView Report and CDC: ILINet.

Influenza-like Illness (ILI) Surveillance Network has each sentinel provider report the number of patients seen that meet the ILI case definition and the total number of patients seen for any reason each week. The “percentage of visits for ILI” is the number of ILI patients divided by the total number of patients visit per week. Nevada’s percentage of ILI visits for week 06 is 2.4% which is above the state baseline of 1.5%. Region 9 ILI percentage for week 06 is 2.7% which is above the region baseline 2.5%. Region 9 includes the following states/territory: Arizona, California, Guam, Hawaii, and Nevada. The national ILI percentage for week 06 is 5.2% which is above the national baseline 2.2%.

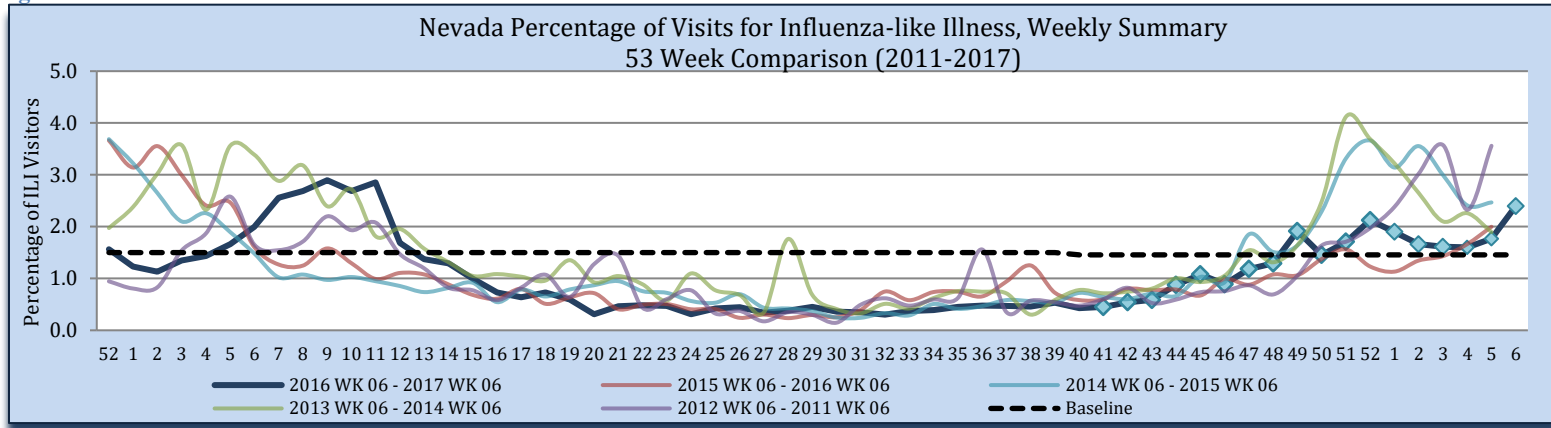
Figure 3



Source of Data: CDC: Flu View Report and CDC: ILINet.

During week 06, 2.4% of visits to sentinel providers were due to ILI; this is higher than the 2015-2016 influenza season (2.0%). There were 11,516 patients seen by sentinel providers during week 06, of which 276 patients presented with ILI; week 06 of 2016, there were 378 patients seen with ILI (18,914 total patients seen).

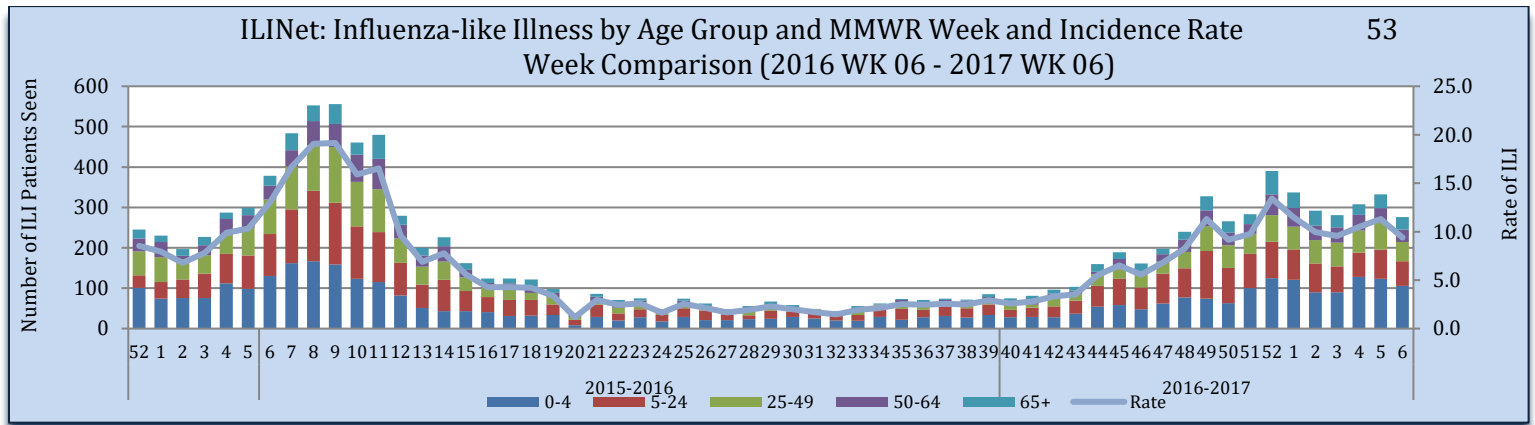
Figure 4



Source of Data: CDC: ILINet.

Influenza-like Illness is reported by age groups. During week 06, patients age 0-4 were the greatest number of patients seen with ILI, at 106 patients seen. The rate for week 06 is 9.4 per 100,000 population. The rate is calculated by the number of patients presented with ILI, divided by the state population, multiplied by 100,000. The estimated state population for 2017 is 2,935,490.

Figure 5



Source of Data: CDC: ILINet.

Influenza Positive Surveillance (NBS and NETSS)

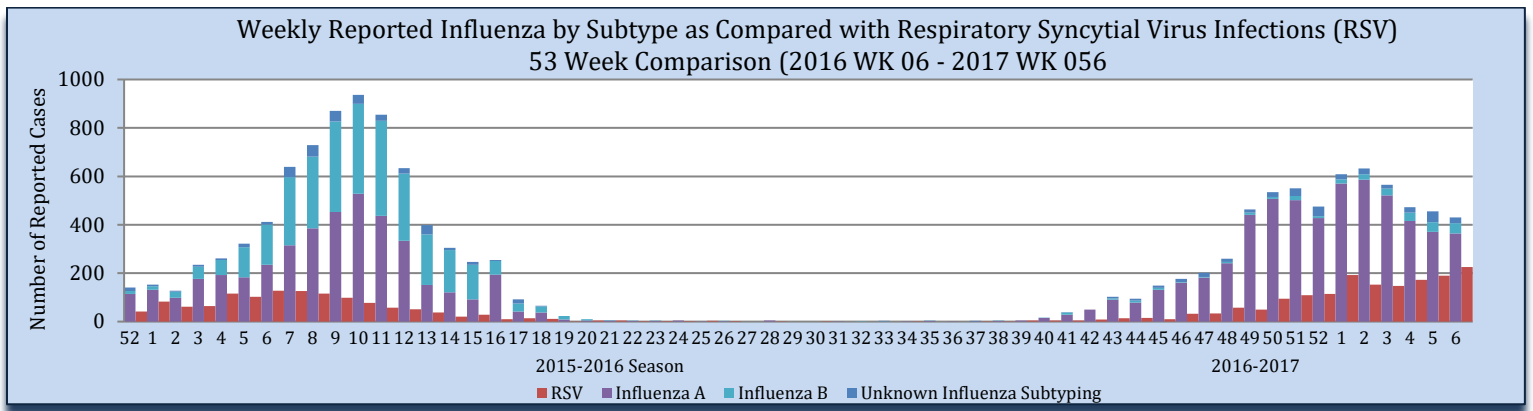
Positive cases of influenza are reported to the state health authority for surveillance purposes. Table 2 and Figure 6 reflect all positive influenza cases reported to the state. Types of influenza testing include commercial rapid diagnostic test (rapid), viral culture, fluorescent antibody, enzyme immunoassay, RT-PCR (PCR), and Immunohistochemistry. The two most common test types in Nevada are Rapid and PCR tests. During week 06, there were 430 influenza cases reported to the state, 364 influenza A, 42 influenza B and 24 unknown subtyping.

Table 2

Reporting Jurisdiction	Reported Influenza Cases by County Jurisdiction and Influenza Type							
	Current Week (Week 06)				Cumulative Influenza Season			
	A	B	Unknown	Total	A	B	Unknown	Total
Carson City Health and Human Services	27	1	0	28	751	3	2	756
Rural Community Health Services	33	1	2	36	524	22	31	577
Southern Nevada Health District	265	36	19	320	2,588	194	167	2,949
Washoe County Health District	39	4	3	46	1,820	50	128	1,998
State of Nevada	364	42	24	430	5,683	269	328	6,280

Source: OPHIE: NBS and SNHD: NETSS.

Figure 6



Source of Data: OPHIE: NBS and SNHD: NETSS.

Hospitalizations

There were 23 hospitalization associated with influenza reported to the state health authority for week 06.

Table 3

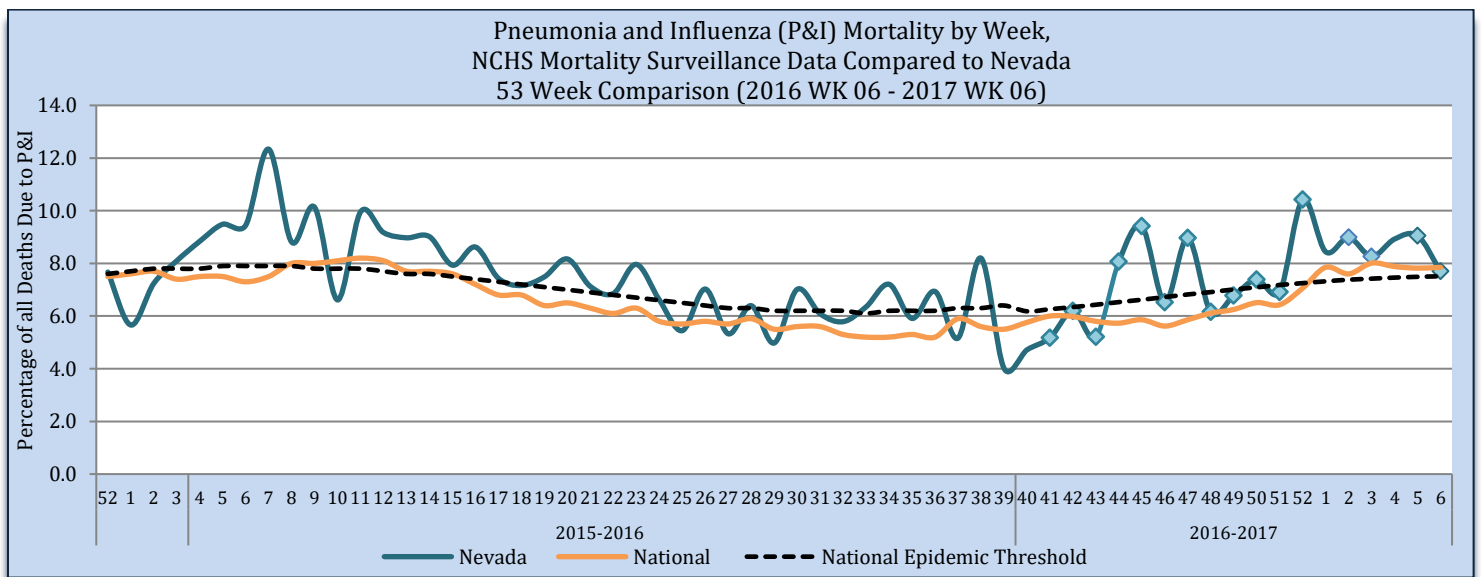
Reporting Jurisdiction	Influenza Hospitalizations			
	Current Week (Week 06)		Cumulative Influenza Season	
	#	%	#	%
Carson City Health and Human Services	0	0.0	29	6.5
Rural Community Health Services	4	17.4	15	3.4
Southern Nevada Health District	14	60.9	148	33.3
Washoe County Health District	5	21.7	252	56.8
State of Nevada	23	100	444	100

Source: Reported to Office of Public Health Informatics and Epidemiology from each Jurisdiction.

Pneumonia and Influenza (P&I) Mortality Surveillance

The Pneumonia and Influenza (P&I) mortality percentage is all deaths, where Pneumonia or Influenza is listed as the underlying or contributing cause of death, divided by the total deaths in Nevada for each week. As of March 1st, there were 31 P&I deaths and 402 total deaths for week 06 in Nevada.

Figure 7



Source: OVR: WEVRRS and CDC: FluView.

Technical Notes

- Data are subject to changes, additionally, there is a lag in reporting.
- Influenza surveillance procedures vary by jurisdiction.
- Influenza-like illness (ILI): a fever greater than or equal 100°F with cough and/or sore throat.
- Percent positive: The number of positive influenza laboratory tests divided by the total number of tests performed.
- Incidence rate is per 100,000 population as estimated by the state demographer.

This report contains information from national and state-level data sources. Influenza surveillance data is collected by a various systems, including:

- Influenza-like Illness Network (ILINet): a sentinel surveillance system in collaboration with the Centers for the Disease Control and Prevention (CDC) where outpatient providers report ILI information weekly.
- National Electronic Telecommunication System for Surveillance (NETSS): a system whereby data is transmits to CDC. Influenza data collected through NETSS does not provide influenza sub-typing information.
- National Electronic Disease Surveillance System (NEDSS): a system for collecting data and monitoring disease trends and outbreaks.
- NEDSS Based System (NBS): an implementation of the NEDSS standards. It provides a secure, accurate, and efficient means of collecting, transmitting, and analyzing public health data.

Citations

1. CDC. FluView: A Weekly Influenza Surveillance Report. <http://www.cdc.gov/flu/weekly/pastreports.htm>.
2. Nevada State Demographer's Office. 2003-2020 ASRHO Estimates and Projections. Division of Public and Behavioral Health edition. Vintage 2015.
3. OPHIE. DPBH. NBS. 2015-2017. Accessed March 2017.
4. Office of Vital Records (OVR). DPBH. Web Enabled Vital Records Registry System (WEVRRS) [unpublished data]. 2015-2017. Accessed March 2017.
5. Southern Nevada Health District (SNHD). NETSS/Trisano. 2015-2017. Accessed March 2017.

Comments, suggestions, and requests for further information may be addressed to:

**NEVADA INFLUENZA SURVEILLANCE PROGRAM
OFFICE OF PUBLIC HEALTH INFORMATICS AND EPIDEMIOLOGY
500 DAMONTE RANCH PKWY, STE 657
RENO, NV 89521
TEL: (775) 684-5289
FAX: (775) 684-5999**

Compiled and Written by:

Liliana E. Wilbert, MPH

Reviewed by:

Jennifer Thompson
Melissa Peek-Bullock

Recommended Citation:

Division of Public and Behavioral Health. Office of Public Health Informatics and Epidemiology. Influenza Weekly Report, 2016 Week 06 (February 07, 2016) through 2017 Week 06 (February 11), Nevada. March 2017 i 06 edition 1.0.

This publication was supported by Cooperative Agreement Number TP000534-02 from the Centers for Disease Control and Prevention and/or Assistant Secretary for Preparedness and Response. Its contents are solely the responsibility of the authors and do not necessarily represent the official views of the Centers for Disease Control and Prevention and/or Assistant Secretary for Preparedness and Response.

